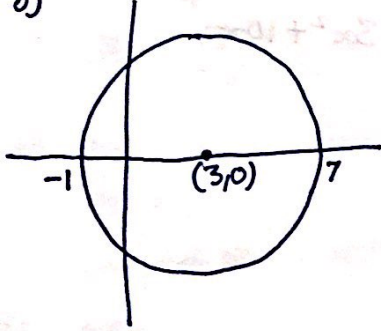


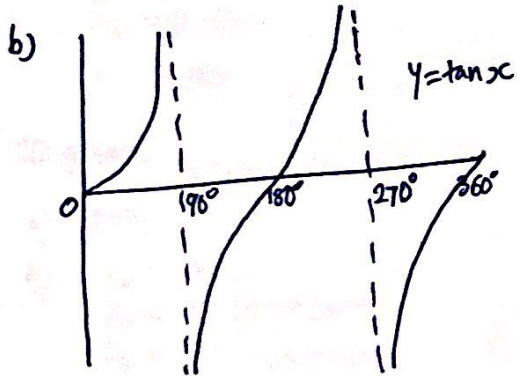
A247 Advanced graphs

- ① a) graph
 b) $x=2, y=-2.9$ and
 $x=-1.2, y=3.3$
 fit from graph

- ② a) $(0,1)$
 b)

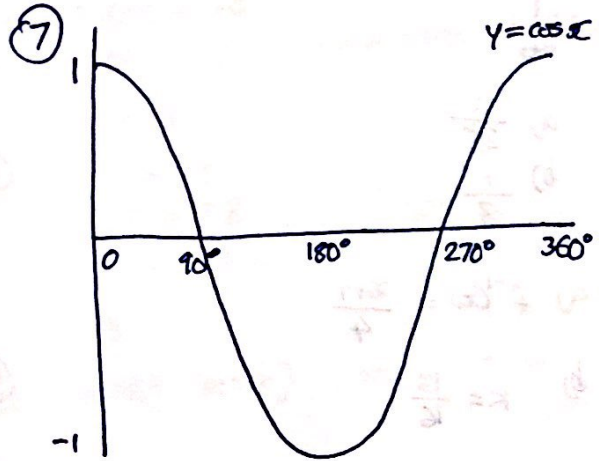
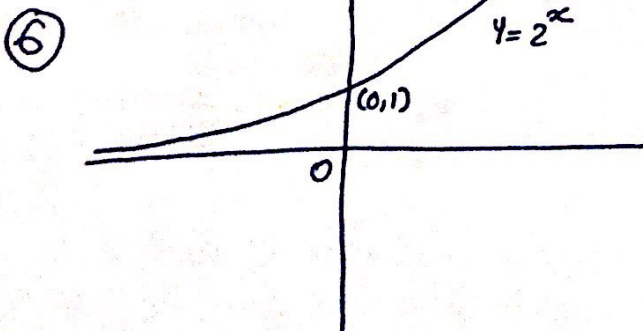


- ③ a) i) $(180,0)$
 ii) $(270,-1)$



- ④ $y = \sinh x$ C
 $y = x^3 + 4x$ F
 $y = 2^x$ A
 $y = \frac{4}{x}$ H

- ⑤ $K=45$



- ⑥ a) proof
 b) $K=5.0625$

