

A135 Sketching quadratics and cubics

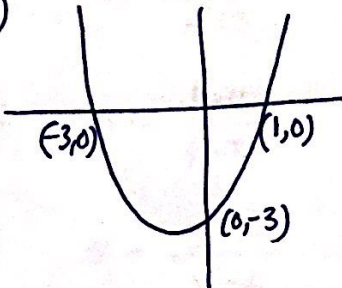
① a) $-1.2, 3.2$

b) $(1, -5)$

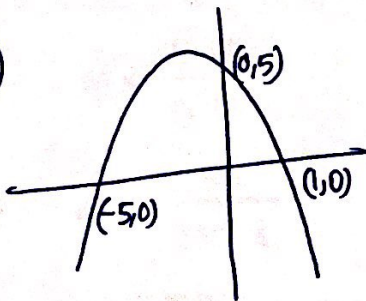
② a) $(1, -4)$

b) $-1, 3$

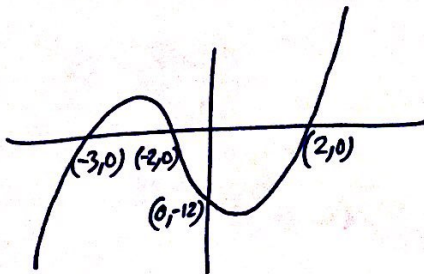
③



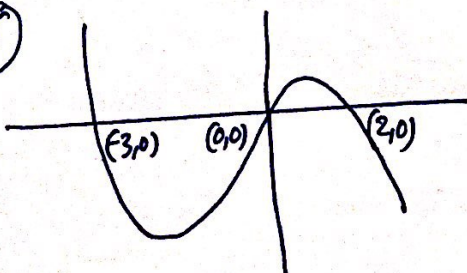
④



⑤



⑥



1. Sketching quadratics and cubics

$\frac{11-10}{2} = \frac{1}{2}$ ①

$\frac{1+1}{2} = 1$ ②

$\frac{1+1}{2} = 1$ ③

$\frac{1+1}{2} = 1$ ④

$\frac{1+1}{2} = 1$ ⑤

$\frac{1+1}{2} = 1$ ⑥

$\frac{1+1}{2} = 1$ ⑦

$\frac{1+1}{2} = 1$ ⑧

$\frac{1+1}{2} = 1$ ⑨

$\frac{1+1}{2} = 1$ ⑩

$\frac{1+1}{2} = 1$ ⑪